

# PAD SITE ADJACENT TO KOHL'S

8660 South Quebec Street, Lone Tree, CO (#341, Lone Tree)



## DEMOGRAPHICS

### POPULATION



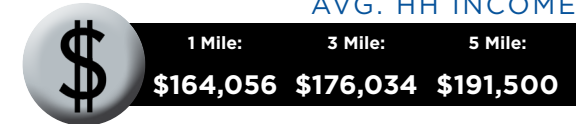
### DAYTIME POPULATION



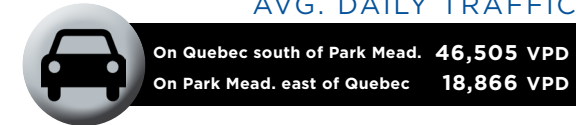
### HOUSEHOLDS



### AVG. HH INCOME



### AVG. DAILY TRAFFIC



For more information, contact:

**Mike DePalma**

720 598 6043

[mdepalma@creginc.com](mailto:mdepalma@creginc.com)

## PROPERTY OVERVIEW:

- 0.75 AC pad available with great visibility and access
- Close proximity to Park Meadows Mall and I-25
- Limited pad availability
- Join Kohl's (#341, Lone Tree), US Bank, King Soopers, Wells Fargo, McDonald's and several other retailers

IN COOPERATION WITH:

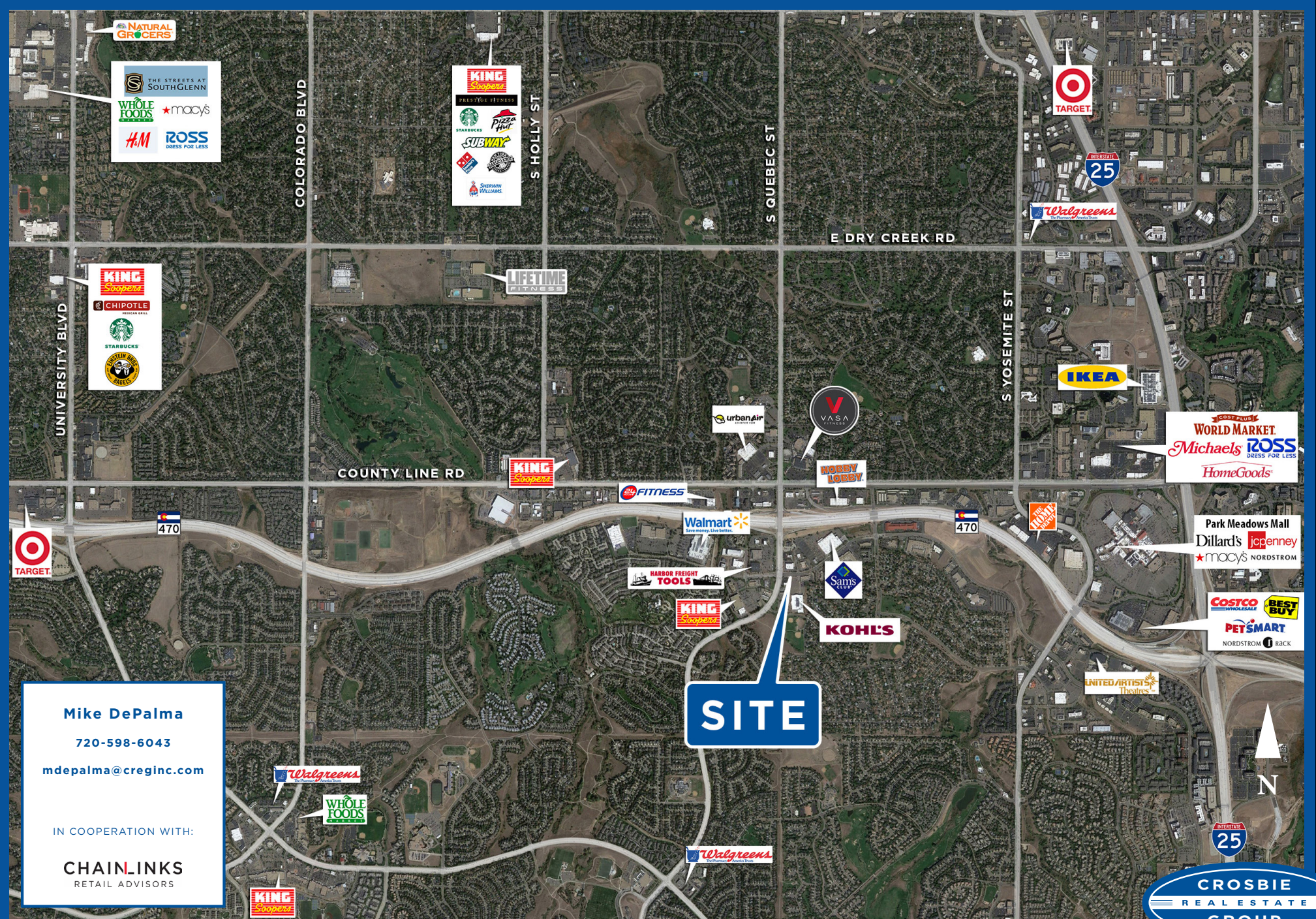
**CHAINLINKS**  
RETAIL ADVISORS





# PAD SITE ADJACENT TO KOHL'S

8660 South Quebec Street, Lone Tree, CO (#341, Lone Tree)



**Mike DePalma**  
 720-598-6043  
 mdpalma@creginc.com

IN COOPERATION WITH:  
**CHAINLINKS**  
 RETAIL ADVISORS

